

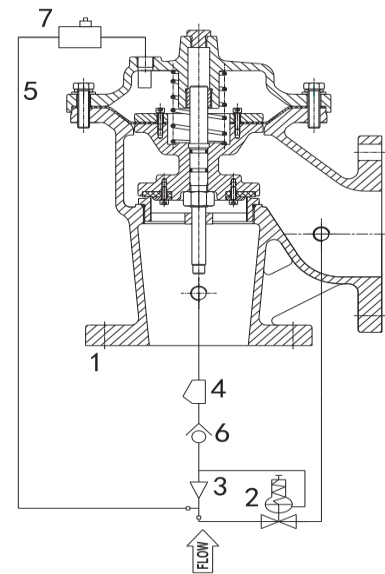


ANGLE TYPE FIRE PUMP RELIEF VALVE

MODEL: SD-2050A-W



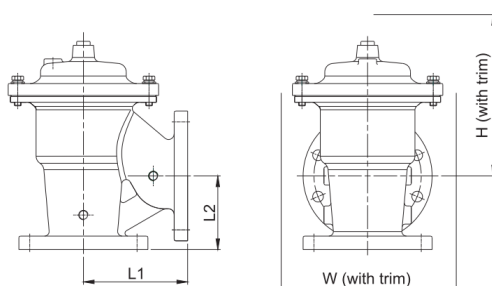
- End Connection: Flange x Flange
Flange x Groove
Grooved x Grooved
- Opens quickly: maintains pressure within close limits.
- Wide range adjustable: 65psi-180psi (4.5-12.4 Bar)
- Pilot operated main valve.
- Simple field adjustable pressure setting, requiring no special tools or system down time.
- Close gradually for surge-free operation
- Limits maximum pump discharge pressure.
- Applicable for water, sea water and foam
- Working Pressure: 300 Psi
- Paint: Fusion bonded epoxy coated interior and exterior to AWWA C550 standard.



MATERIAL SPECIFICATION

| No. | Part Name | Material |
|-----|-------------------|----------------|
| 1 | Body | Ductile Iron |
| 2 | Seat | SS304 |
| 3 | Seal Disc | Rubber |
| 4 | Diaphragm | Natural Rubber |
| 5 | Diaphragm Disc | Ductile Iron |
| 6 | Diaphragm Adaptor | Ductile Iron |
| 7 | Spring | SS304 |
| 8 | Bonnet | Ductile Iron |
| 9 | Bonnet Bolts | Carbon Steel |
| 10 | Stem | SS304 |
| 11 | O-Ring | Rubber |

| No. | Components | Material |
|-----|-------------------------|----------|
| a | Basic Control Valve | Assembly |
| b | Pressure Reducing Pilot | Bronze |
| c | Ejector | SS304 |
| d | Y-Strainer | SS304 |
| e | Tubing /Fittings | SS304 |
| f | Check Valve | SS304 |
| g | Stabffilzler | SS304 |



DIMENSION

| Size | L1 | L2 | H | W |
|------|-----|-----|-----|-----|
| 3" | 149 | 110 | 265 | 455 |
| 4" | 185 | 130 | 310 | 470 |
| 5" | 218 | 140 | 360 | 490 |
| 6" | 265 | 155 | 380 | 540 |
| 8" | 326 | 190 | 450 | 590 |

Units are in mm