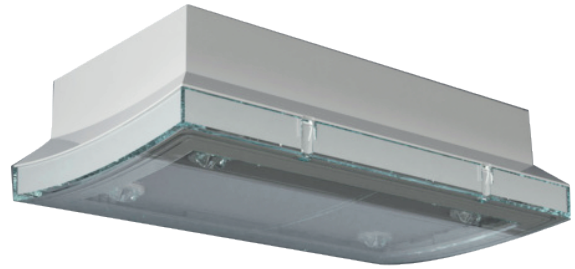


# Emergency luminaire

## Model No: M70UH

High Intensity Universal Mount LED Emergency Luminaire precisely for High Ceiling Area. It complies with the Emergency lighting requirements according to DIN EN 60598-1, DIN EN 60598-2-22 and DIN EN 1838.



The Luminaires housings are made up with high quality Polycarbonate materials ensures a good heat dissipation and ensures a long service life for LED.

### TECHNICAL DATA

Luminaire type	Emergency luminaire
Mounting	Ceiling mounted
Illuminant	LED
Housing material	Plastic
Colour	RAL 9003
Mechanical rating IP	65
Impact resistance IK	6
Protection class	2
Supply	Central power supply system
Monitoring	ML - Central power supply system
Operation time	CPS
Operation mode	single luminaire switching
Input Voltage AC	230 V
Input Frequency Hz	50 / 60 Hz
Input Voltage DC	216 V
Power consumption max.	9,4 W
Power consumption maintained	9,4 W
Power consumption non-maintained	1,1 W
Ambient temperature maintained mode	-20 °C / 40 °C
Ambient temperature non-maintained mode	-20 °C / 40 °C
Length	65 mm
Width	236 mm
Height	136 mm

Weight	0.67 kg
Weight incl. Packaging	0.67 kg
Connection cross-section	2.5 mm
Switching input L'	Yes
Emergency light blocking	No
Battery connector	None
Dimming function	Yes
Luminous flux mains mode	1050 lm
Luminous flux emergency mode	1050 lm

---

**TECHNICAL DRAWING**

