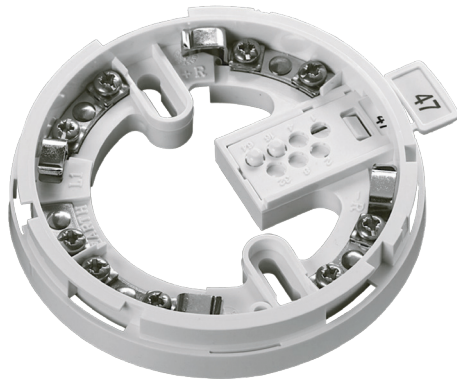


MOUNTING BASE



S-A4001

DESCRIPTION

Mounting base which is low insertion force base with stainless steel contacts for the detector terminals , XPERT Cards are supplied with all bases.

FEATURES

- XPERT Addressing.
- One way Fit.
- Locking feature to prevent unauthorized removal.
-

INSTALLATION

The base must be installed in accordance with the applicable NFPA standards, local codes and jurisdictional authorities. Failure to follow these instructions may result in failure of the detectors to report an alarm condition. Shield Fire, Safety and Security Ltd is not responsible for detectors which are improperly installed, maintained and tested.

Before installing the base check the continuity, polarity and insulation resistance of all wiring. Check that siting is in accordance with the fire system drawings and conforms to all applicable local codes such as NFPA 72.

Use 77 mm octagonal box for direct connection to the base. 102 mm octagonal and 102 mm square boxes may be used with proper UL listed mounting brackets. When mounting on a wall, install 102 mm to 305 mm from the ceiling. Use 3M Weather ban 606 Non-Flammable sealing compound (or equivalent) to seal field wiring conduit opening in the electrical box, this will reduce the stack ect. Secure the base to the electrical box with appropriate screws. Do not overtighten the screws. The raised mark on the side of the base indicates the direction of the detector LED when fitted. Connect the shield, if required, to the shield terminal on the base.

TECHNICAL DATA

Working Voltage	17 - 28 V DC
Modulation Voltage (peak to peak)	5 - 9 V DC
Alarm LED Current	2.5 mA
Supervisory current	250 µA
Surge Current	1.0 mA

Fig. 1 - Wiring diagram of loop with one remote indicator

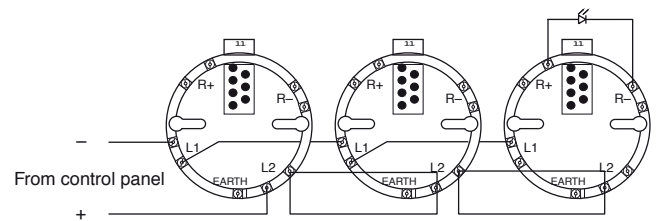
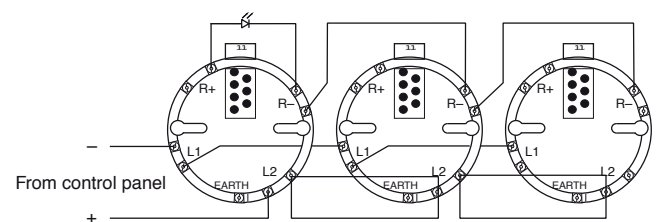


Fig. 2 - Wiring diagram of loop with common remote indicator



CAUTION :

Do not use looped wiring terminal. Break wire run to provide supervision of connection. Terminal L1 and L2 are polarity insensitive.

