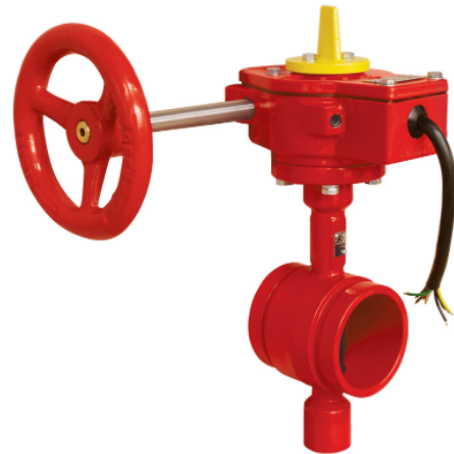


BUTTERFLY VALVES, GROOVED END

MODEL: SD-300GK-BV

SPECIFICATION

- Working pressure: 300psi
- Connection end: Grooved to AWWA C606
- Temperature: 0° C to 80° C
- Coating: Fusion Bonded Epoxy Coating complies with ANSI/AWWA C550



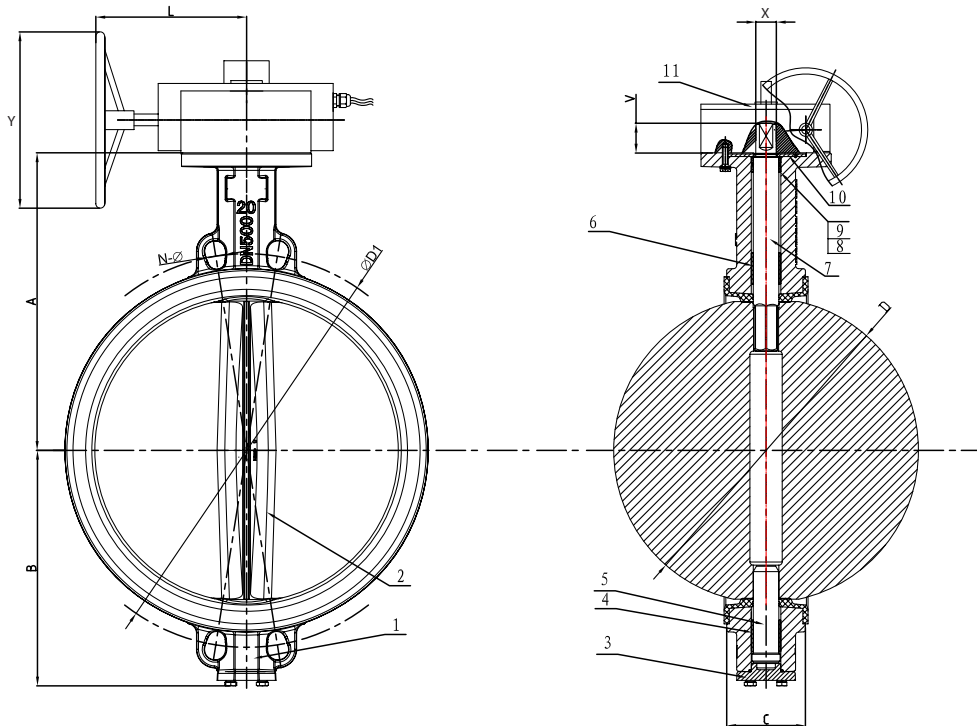
Part No.	Part Name	Material
1	Upper Shaft Sealing Nut	WCB
2	Shaft Seal	EPDM
3	Body	ASTM A536
4	Upper Shaft	SS416
5	Disc + Rubber Seat	Ductile Iron + EPDM
6	Lower Shaft	SS416
7	Lower Shaft Sealing Nut	WCB
8	O-Ring	EPDM
9	Stem Bush	C95400+Graphite
10	Key	WCB
11	Lower Shaft Seal*	EPDM
12	Gear Box	

Ž >}Á Œ ^Z (š ^ o }voÇ (}Œ fi_X

Size	A	B	C	D	E	F	G	H	K		J	P	M	N	d	L
10_	260	200	63	267.4	262.6	19	12.7	126	210	232	300	125	102	12	30.5	159
				273	268.3											
12_	300	240	77	318.5	312.9	19	12.7	161	249		350	150	125	14	33	165
				323.8	318.3											

Unit : mm

BUTTERFLY VALVES, WAFER TYPE



PART NO.	PART NAME	MATERIAL
1	Body	ASTM A536, 65-45-12
2	Disc	ASTM A536, 65-45-12 + EPDM
3	Bonnet	ASTM A536, 65-45-12
4	Bushing	DN400: PTFE DN450: ZCuZn38Mn2Pb2
5	Stem	DN400: AISI 420 DN450: AISI 431
6	Bushing	ZCuZn38Mn2Pb2
7	Stem	DN400: AISI 420 DN450: AISI 431
8	Bushing	ZCuZn38Mn2Pb2
9	O Ring	NBR
10	Plate	---
11	Gear	ASTM A536, 65-45-12

- Working pressure: 175psi
- Dimension Standard: API 609
- Structure Length: ISO 5752
- Flange Specification: ASME 16.5 Class 150
- Top Flange: ISO 5211 (F14)

Size	A	B	C	D±0.5	D1	V±1	X	N-ø	G±0.15	L	Y
16"	400±1.5	320	102±3.3	389.6	539.8±1.52	48	33.2	16-ø28.5	27	288	380
18"	422±1.5	345	114±3.3	441	577.9±1.52	48	38.1	16-ø32	27	288	380

Unit : mm