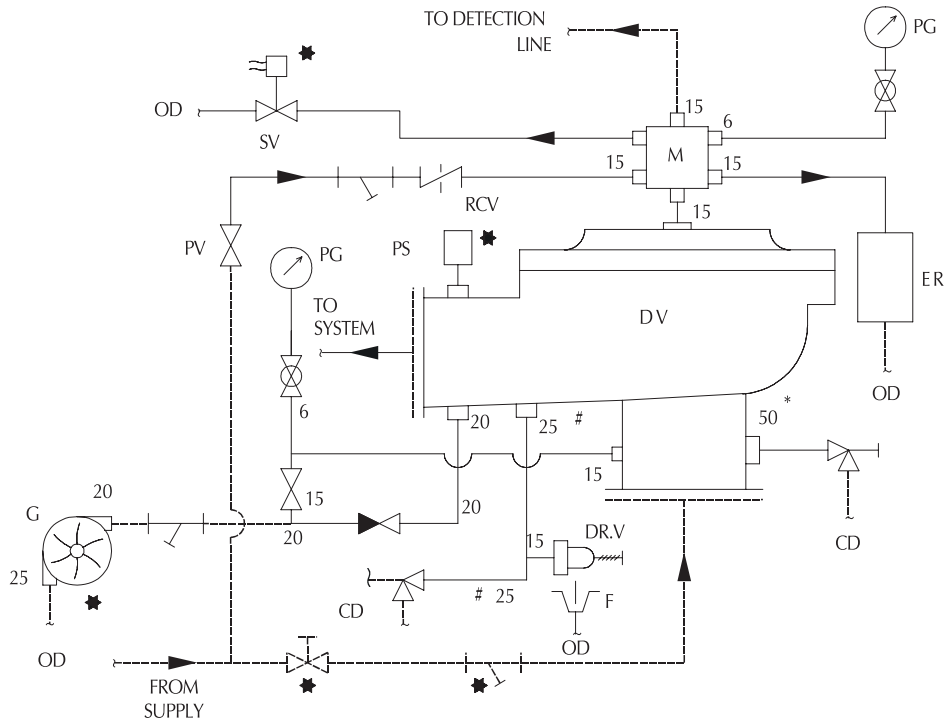


Shield - Electric & Hydraulic Release Trim - Schematic Deluge Valve 200 / 150 / 100 / 80 / 50 NB



- | | | | |
|------|-------------------|-----|---------------------------|
| | VALVE | * | 32 NB FOR DV 80 & 50 NB |
| | GAUGE VALVE | # | 20 NB FOR DV 80 & 50 NB |
| | NON RETURN VALVE | OD | - OPEN DRAIN |
| | STRAINER | CD | - COMMON DRAIN |
| | ANGLE VALVE | DV | - DELUGE VALVE |
| | VALVE STOP | ER | - EMERGENCY RELEASE BOX |
| | OPTIONAL | M | - SIX WAY MANIFOLD |
| | BY USER | RCV | - RESTRICTION CHECK VALVE |
| DR.V | - DRIP VALVE | PDA | - POSITIVE DRAIN ACTUATOR |
| F | - FUNNEL | PG | - PRESSURE GAUGE |
| PS | - PRESSURE SWITCH | SV | - SOLENOID VALVE |
| | | PV | - PRIMING VALVE |

NOTE : PRIMING VALVE MUST BE KEPT IN 'OPEN' POSITION, WHILE THE SYSTEM IS IN SERVICE



Shield/2005 - Shield reserves the right to change the contents without notice.