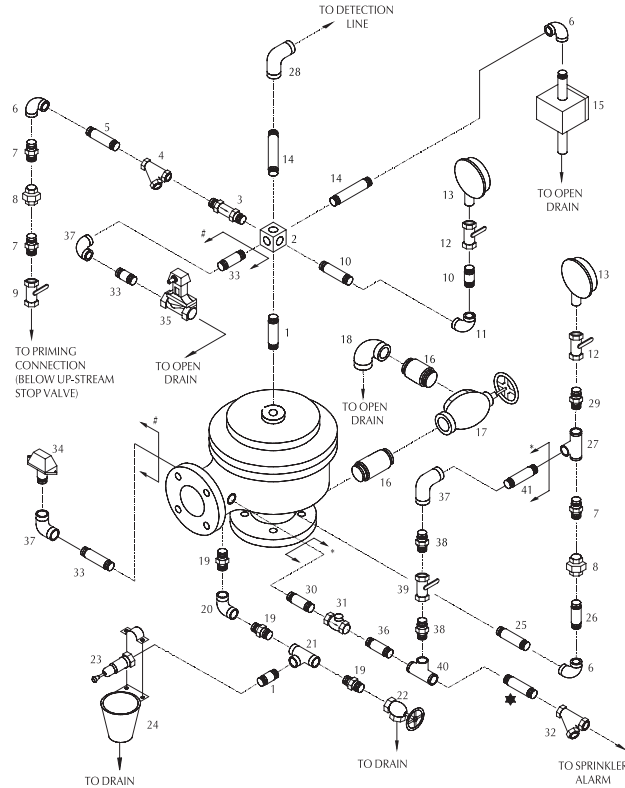


Shield - Hydraulic & Electric Release Trim Deluge Valve 80 NB

ELECTRIC TRIM OPTIONAL
 * TEST & ALARM TRIM OPTIONAL
 # TO SUIT AT SITE BY USER



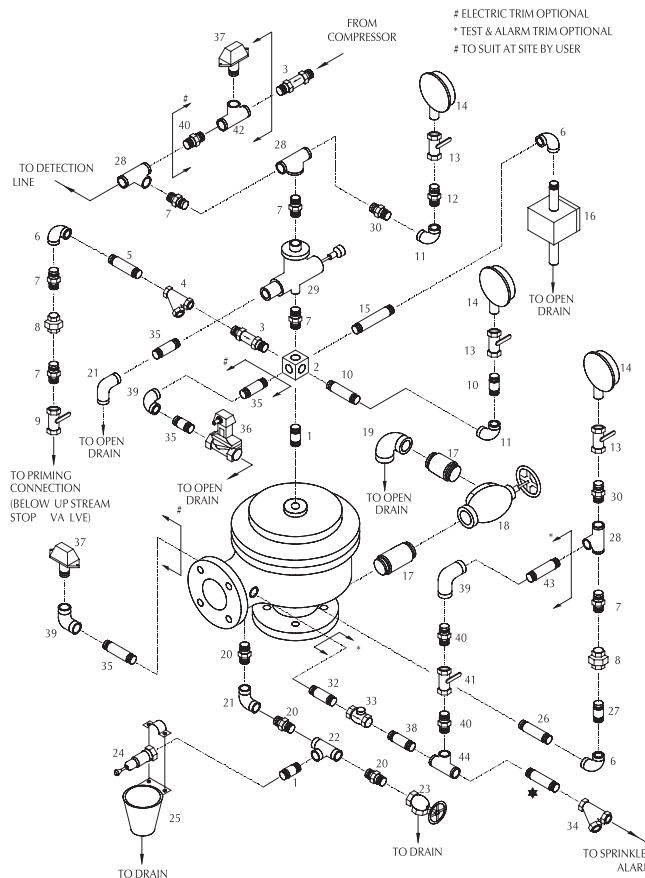
PART LIST

ITEM NO.	CODE	DESCRIPTION	QTY.	SIZE
1	9396	PIPE NIPPLE	2	1/2" X 85 mm LG
2	6251	6 WAY MANIFOLD	1	'SHIELD' MAKE MODEL -SD-A
3	1906	RESTRICTION CHECK VALVE	1	'SHIELD' MAKE MODEL - SD-A
4	9381	'Y' STRAINER	1	1/2"
5	9397	PIPE NIPPLE	1	1/2" X 100 mm LG
6	9376	ELBOW	3	1/2"
7	9365	HEX NIPPLE	3	1/2"
8	9370	UNION	2	1/2"
9	9423	BALL VALVE	1	1/2"
10	9395	PIPE NIPPLE	2	1/4" X 110 mm LG
11	9374	ELBOW	1	1/4"
12	9477	GAUGE VALVE	2	1/4"
13	9456	PRESSURE GAUGE	2	1/4", 0 to 2050 kPa, 3 1/2" dial.
14	9404	PIPE NIPPLE	2	1/2" X 275 mm LG
15	1916	EMERGENCY RELEASE STATION	1	'SHIELD' MAKE MODEL - SD-A
16	9408	PIPE NIPPLE	2	1 1/4" X 130 mm LG
17	9392	ANGLE VALVE	1	1 1/4"
18	9379	ELBOW	1	1 1/4"
19	9366	HEX NIPPLE	3	3/4"
20	9377	ELBOW	1	3/4"
21	9411	REDUCING TEE	1	3/4" X 1/2" X 3/4"
22	9393	ANGLE VALVE	1	3/4"

ITEM NO.	CODE	DESCRIPTION	QTY.	SIZE
OPTIONAL				
23	1911	DRIP VALVE	1	'SHIELD' MAKE MODEL - SD-A
24	1901	FUNNEL	1	'SHIELD' MAKE MODEL -SD-A
25	9401	PIPE NIPPLE	1	1/2" X 180 mm LG
26	9398	PIPE NIPPLE	1	1/2" X 125 mm LG
27	9410	TEE	1	1/2"
28	9418	REDUCING ELBOW	1	1" X 1/2"
29	9413	REDUCING HEX NIPPLE	1	1/2" X 1/4"
30	9406	PIPE NIPPLE	1	3/4" X 100 mm LG
31	9415	NON RETURN VALVE	1	3/4"
32	9382	'Y' STRAINER	1	3/4"
33	9400	PIPE NIPPLE	3	1/2" X 135 mm LG
34	-	PRESSURE SWITCH	1	1/2"
35	-	SOLENOID VALVE	1	1/2" size 24V DC/ 110V AC/220V AC
36	9426	PIPE NIPPLE	1	3/4" X 60 LG
37	9376	ELBOW	3	1/2"
38	9365	HEX NIPPLE	2	1/2"
39	9423	BALL VALVE	1	1/2"
40	9411	REDUCING TEE	1	3/4" X 1/2" X 3/4"
41	9397	PIPE NIPPLE	1	1/2" X 100 mm LG



Shield - Pneumatic & Electric Release Trim Deluge Valve 80 NB



PART LIST

ITEM NO.	CODE	DESCRIPTION	QTY.	SIZE
1	9396	PIPE NIPPLE	2	1/2" X 85 mm LG
2	6251	6 WAY MANIFOLD	1	'SHIELD' MAKE MODEL - SD-A
3	1906	RESTRICTION CHECK VALVE	2	'SHIELD' MAKE MODEL - SD-A
4	9381	'Y' STRAINER	1	1/2"
5	9397	PIPE NIPPLE	1	1/2" X 100 mm LG
6	9376	ELBOW	3	1/2"
7	9365	HEX NIPPLE	6	1/2"
8	9370	UNION	2	1/2"
9	9423	BALL VALVE	1	1/2"
10	9395	PIPE NIPPLE	2	1/4" X 110 mm LG
11	9374	ELBOW	2	1/4"
12	9363	HEX NIPPLE	1	1/4"
13	9477	GAUGE VALVE	3	1/4"
14	9456	PRESSURE GAUGE	3	1/4" 0 to 2050 kPa, 3 1/2" dial.
15	9404	PIPE NIPPLE	1	1/2" X 275 mm LG
16	1916	EMERGENCY RELEASE STATION	1	'SHIELD' MAKE MODEL - SD-A
17	9408	PIPE NIPPLE	2	1 1/4" X 130 mm LG
18	9392	ANGLE VALVE	1	1 1/4"
19	9379	ELBOW	1	1 1/4"
20	9366	HEX NIPPLE	3	3/4"
21	9377	ELBOW	2	3/4"
22	9411	REDUCING TEE	1	3/4" X 1/2" X 3/4"
23	9393	ANGLE VALVE	1	3/4"

ITEM NO.	CODE	DESCRIPTION	QTY.	SIZE
OPTIONAL				
24	1911	DRIP VALVE	1	'SHIELD' MAKE MODEL - SD-A
25	1901	FUNNEL	1	'SHIELD' MAKE MODEL - SD-A
26	9401	PIPE NIPPLE	1	1/2" X 180 mm LG
27	9398	PIPE NIPPLE	1	1/2" X 125 mm LG
28	9410	TEE	3	1/2"
29	1436	POSITIVE DRAIN ACTUATOR	1	'SHIELD' MAKE MODEL - SD-A
30	9413	REDUCING HEX NIPPLE	2	1/2" X 1/2"
31	9407	PIPE NIPPLE	1	3/4" X 130 mm LG
32	9406	PIPE NIPPLE	1	3/4" X 100 mm LG
33	9415	NON RETURN VALVE	1	3/4"
34	9382	'Y' TYPE STRAINER	1	3/4"
35	9400	PIPE NIPPLE	3	1/2" X 135 mm LG
36	-	SOLENOID VALVE	1	1/2" size 24VDC / 110V AC/220V AC
37	-	PRESSURE SWITCH	2	1/2"
38	9426	PIPE NIPPLE	1	3/4" X 60 LG
39	9376	ELBOW	3	1/2"
40	9365	HEX NIPPLE	3	1/2"
41	9423	BALL VALVE	1	1/2"
42	9410	TEE	1	1/2"
43	9397	PIPE NIPPLE	1	1/2" X 100 mm LG
44	9411	REDUCING TEE	1	3/4" X 1/2" X 3/4"

