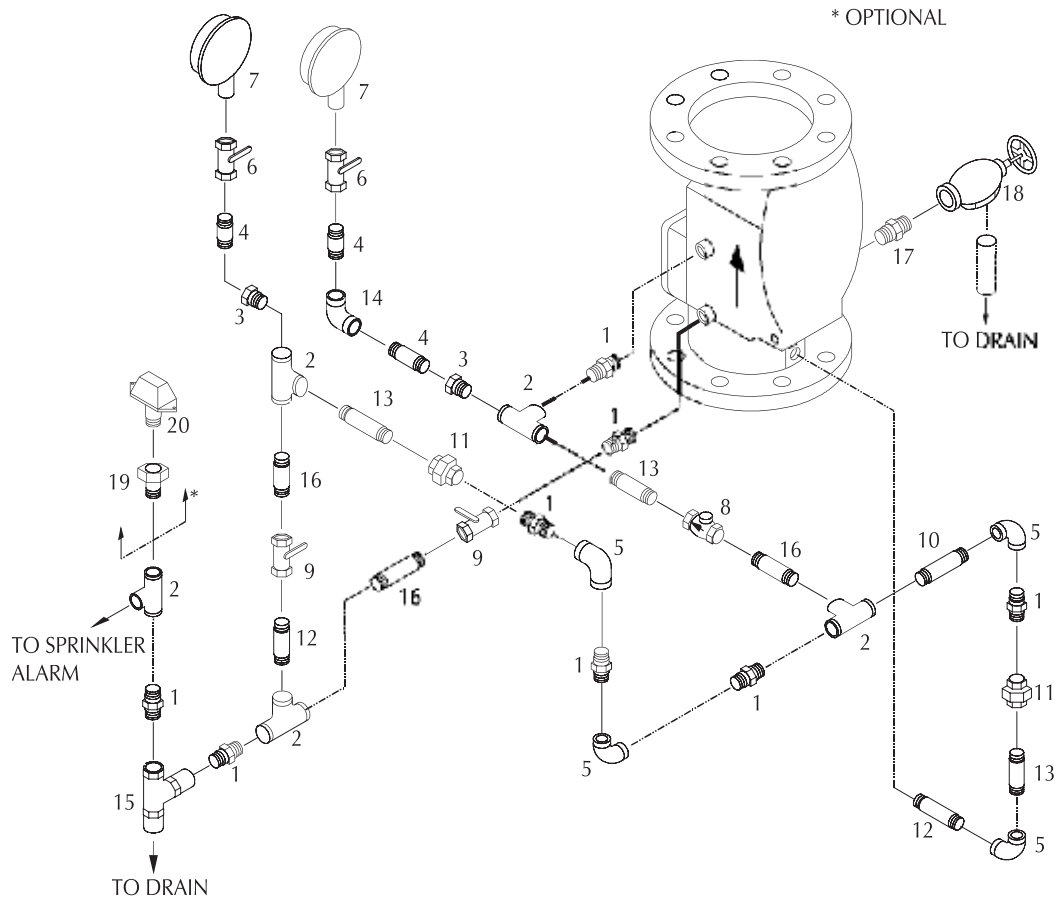


Shield - Constant Pressure Trim for Alarm Valve 200 NB



PART LIST

ITEM NO.	CODE	DESCRIPTION	QTY.	SIZE
1	9366	HEX NIPPLE	8	3/4"
2	9419	TEE	5	3/4"
3	9420	REDUCING BUSH	2	3/4" X 1/4"
4	9395	PIPE NIPPLE	3	1/4" X 110 mm LG
5	9377	ELBOW	4	3/4"
6	9477	GAUGE VALVE	2	1/4"
7	9456	PRESSURE GAUGE	2	1/4"
8	9421	SWING CHECK VALVE	1	3/4"
9	9425	BALL VALVE	2	3/4"
10	9407	PIPE NIPPLE	1	3/4" X 130 mm LG
11	9371	UNION	2	3/4"

ITEM NO.	CODE	DESCRIPTION	QTY.	SIZE
12	9406	PIPE NIPPLE	2	3/4" X 100 mm LG
13	9441	PIPE NIPPLE	1	3/4" X 80 mm LG
14	9374	ELBOW	1	1/1"
15	1028	RESTRICTION NOZZLE ASSY.	1	-
16	9426	PIPE NIPPLE	3	3/4" X 60 mm LG
17	9369	HEX NIPPLE	1	2"
18	9394	ANGLE VALVE	1	2"
19	9437	REDUCING BUSH (optional)	1	3/4" X 1/2"
20	-	PRESSURE SWITCH (optional)	1	1/2" END CONNECTION

